

MIND THE GAP, AND GET THE URGE TO MERGE

FACT SHEET 04 MERGING

COME TOGETHER, RIGHT NOW.

Merging with traffic on a freeway or highway can be intimidating / frightening / challenging. While it may seem difficult to find a gap when a stream of cars and trucks are travelling at 100km per hour, actually, **it's not too hard if you follow some simple rules.**

HOW DO YOU DO IT?

Merging can be done safely with the potential for accidents to be avoided.

For highways or freeways, pick a safe gap before entering and quickly match your speed to the surrounding traffic (but do not speed).

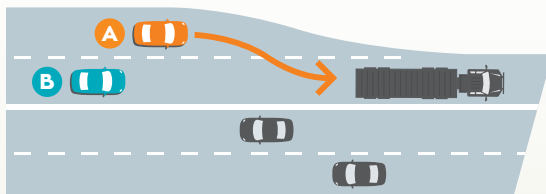
When two lanes become one, use your indicator and carefully merge into traffic. If the dashed lines continue you'll need to give way to traffic in the right lane. If the dashed lines stop and you're in front of other traffic, they should give way to you.

In theory this is how it should work but awareness of your surroundings, and patience, is key.



DASHED LINES CONTINUE

Car A gives way to Car B.



DASHED LINES STOP

Car B gives way to Car A.

